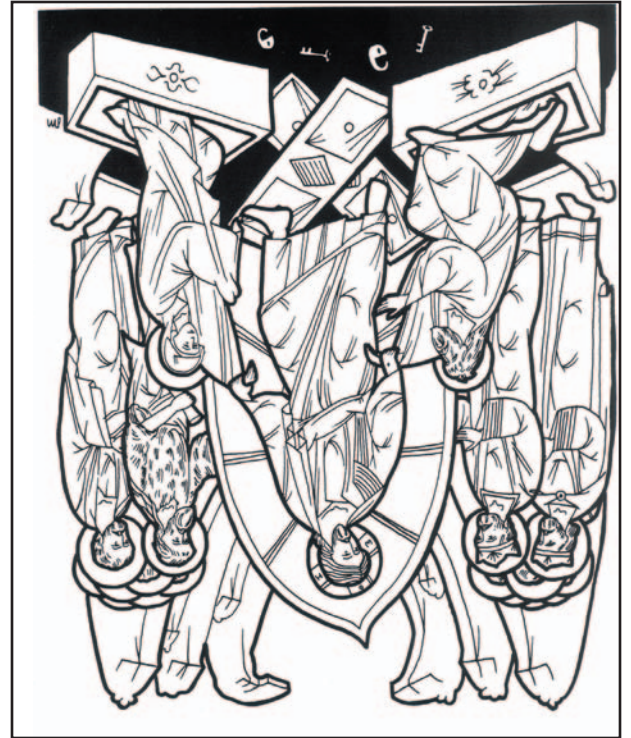


. Cut from dot to edge of paper

Fold Line

*Christ is risen from the dead, trampling
down death by death, and upon those in
the tombs bestowing life.*

Troparion



Pascha

In the icon of the Resurrection, Jesus steps on two planks that represent the doors of Hades, the place of the dead. In the dark area are locks and keys, symbols of bondage, indicating that man is no longer bound by sin and death. Jesus has burst the doors of dark Hades and stands victorious in glorious garments of white. He pulls from their tombs Adam and Eve, who represent all the righteous who lived before Christ.

Fold Line

. Cut from dot to edge of paper