

December 27th

Proto-martyr Stephen the Archdeacon

1st Exaposteilarion

Byzantine Tone 3

Special Melody: *From the heights our Savior, Christ*



F D C F D

1) Un - to Thee as to the King is Ste - phen brought, that

Un. F D

liv - ing crown, who now de - part - eth from the flesh

C F D E F G

to Thee, Who cam - est down in flesh; and for Thy sake, Al -

D

-might - y God,, he hath in splen - did glo - ry

C F

ac - com - plished his con - test well.

December 27th

Proto-martyr Stephen the Archdeacon

2nd Exapostelarian & Theotokion

Byzantine Mode 2
Special Melody: *Upon that mount in Galilee*



2) He that was filled in ver - y truth with God - like grace and
3) Now there is born in Beth - le - hem, as the Babe of — a



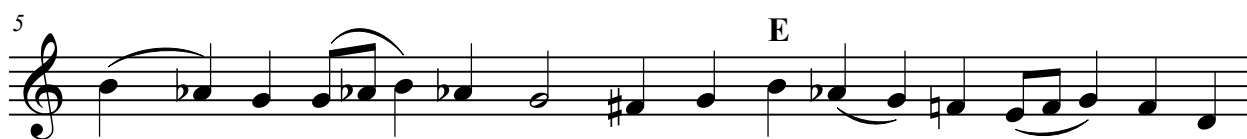
pow - er, in work - ing won - drous signs, — re - proved
Vir - gin, the co - ē - ter - nal Word — of God,



the bod - y of — God - slay - ers who med - i - tat - ed — but
of ē - qual throne and na - ture with both the Fa - ther — and



vain - ly. Yet with a tongue most loft - y did Ste - phen
Spir - it; and the First Mar - tyr Ste - phen, hav - ing pro -




speak — the things of God: Now I see Je - sus stand - ing at
- claimed Him o - pen - ly as our God and — our Sav - ior; is



the right hand — of the Fa - ther; so spake the first of
stoned to death — by blood - guil - ty hands, yet re - joic - eth

December 27th - Proto-martyr Stephen - Exaposteilaria & Theotokion - 2


7 **G**



Mar - tyrs; and when they stoned him, he went up
great - ly; and he as - cend - eth un - to Christ,

Detailed description: This is the first musical staff, starting at measure 7. It features a treble clef and a key signature of one flat (B-flat). The melody begins with a quarter note G4, followed by quarter notes A4 and Bb4. A slur covers the next two notes, G4 and F4. The melody continues with quarter notes E4, D4, and C4. A slur covers the next two notes, Bb4 and A4. The staff concludes with a quarter note G4. The chord 'G' is indicated above the staff.


8 **E**



to Christ God crowned in glo - - ry.

Detailed description: This is the second musical staff, starting at measure 8. It features a treble clef and a key signature of one flat. The melody begins with a quarter note Bb4, followed by quarter notes A4 and G4. A slur covers the next two notes, F4 and E4. The melody continues with quarter notes D4, C4, and Bb4. A slur covers the next two notes, A4 and G4. The staff concludes with a quarter note F4. The chord 'E' is indicated above the staff.

9 **Un. rit. F G**



wear - ing a crown in glo - - - ry.

Detailed description: This is the third musical staff, starting at measure 9. It features a treble clef and a key signature of one flat. The melody begins with a quarter note Bb4, followed by quarter notes A4 and G4. A slur covers the next two notes, F4 and E4. The melody continues with quarter notes D4, C4, and Bb4. A slur covers the next two notes, A4 and G4. The staff concludes with a quarter note F4. The chords 'Un. rit.', 'F', and 'G' are indicated above the staff.