

## Venerable Alypios the Stylite of Adrianople

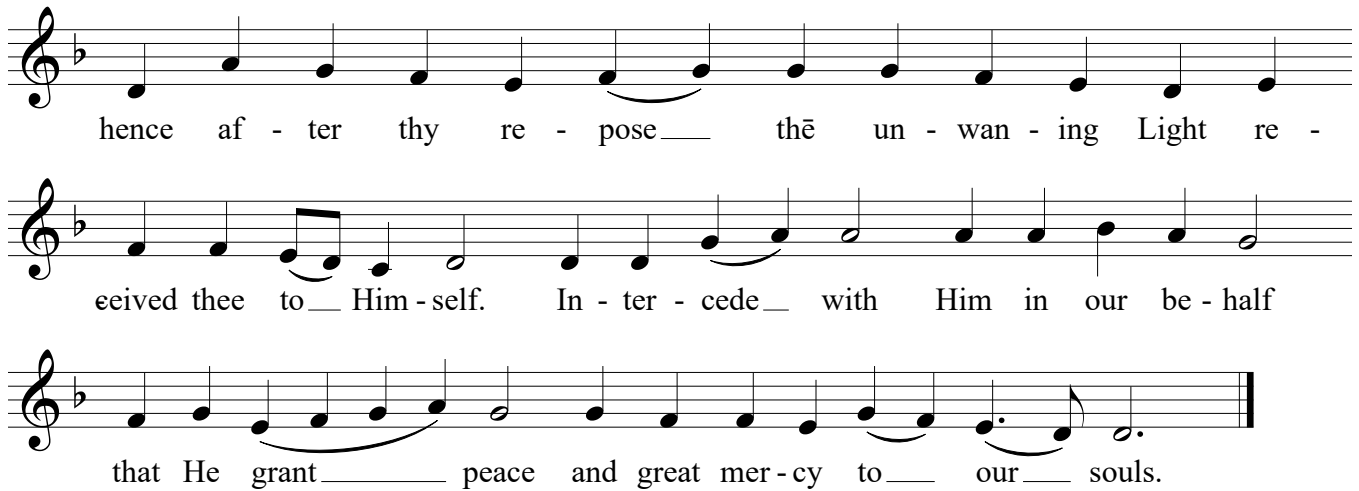
## Byzantine Chant Tone 1

**Adapted by Dn. John El Massih**

[illegible][illegible]

The first staff of music is in G major (one sharp) and 4/4 time. It begins with a treble clef and a key signature of one sharp (F#). The melody consists of the following notes: G4 (quarter), A4 (quarter), B4 (quarter), C5 (quarter), B4 (quarter), A4 (quarter), G4 (quarter), F#4 (quarter), E4 (quarter), D4 (half). The staff ends with a double bar line.

Text & music used with permission. Copyright, 2005. Holy Transfiguration Monastery, Brookline, MA.  
Antiochian Orthodox Christian Archdiocese of North America, Rev. 1, 10/27/2023, CAH



13

**D**

