


Lenten Triodion

The Sunday of Forgiveness (Cheese Fare)


Stichera at "O Lord, I have cried"

Byzantine Tone 6/Plagal Second Mode
Special Melody: *Having laid up all their hope*

G



1) Af - ter tak - ing me as dust out of thē earth, my_ Cre -



- a - tor and my Lord, with quick - 'ning breath,

E




made me live, gave me a soul, and he hon - ored me

G



as the prince_ of all things vis - i - ble up - on_ earth,

F




with a life_ that ri - valed An - gel - kind.

G E



But Sa - tan, full of guile, mak - ing of the ser - pent his in - stru - ment,

G



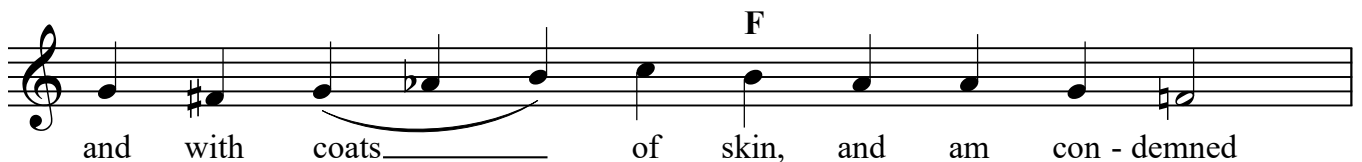
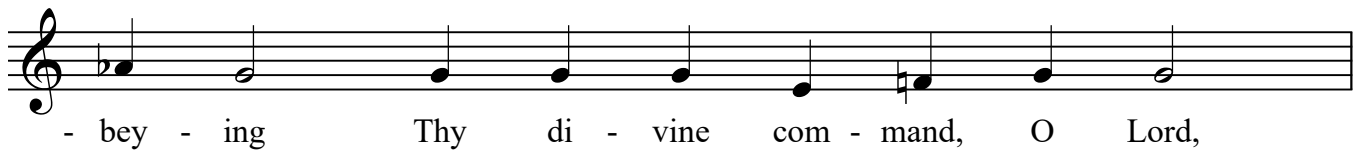
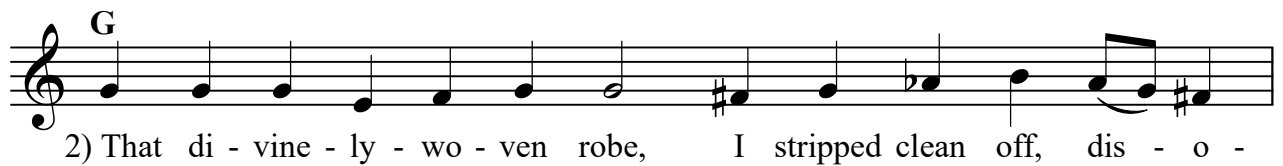
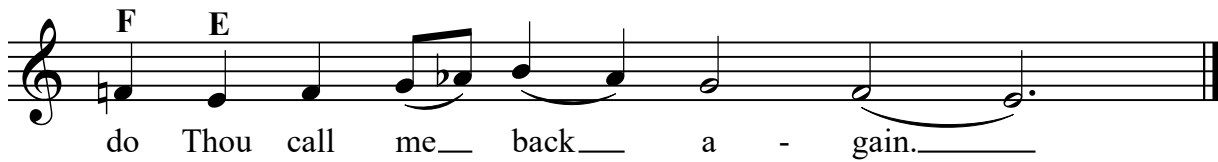
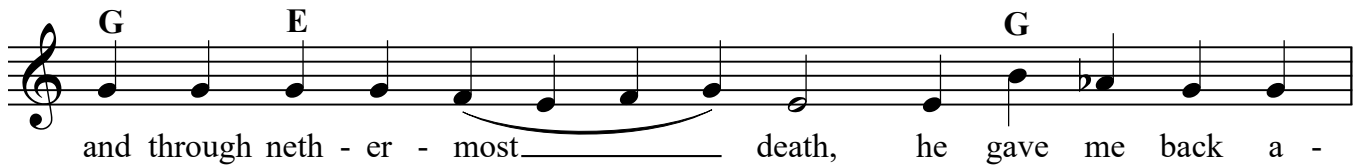
en - ticed me with the bait of food,

C

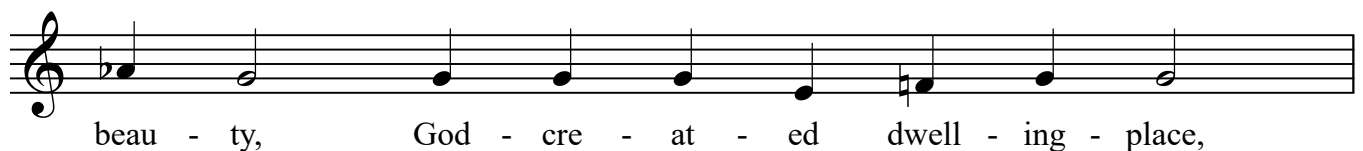
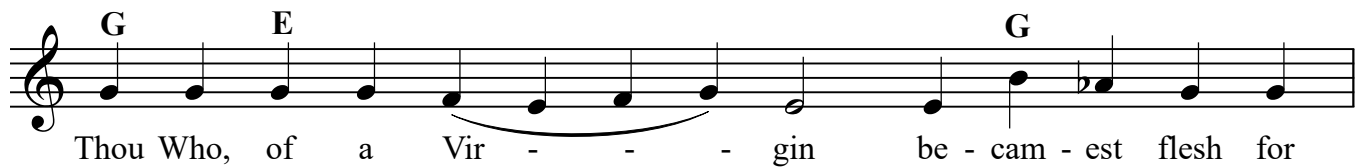
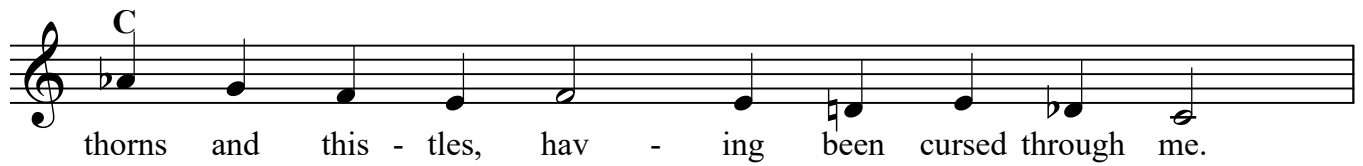
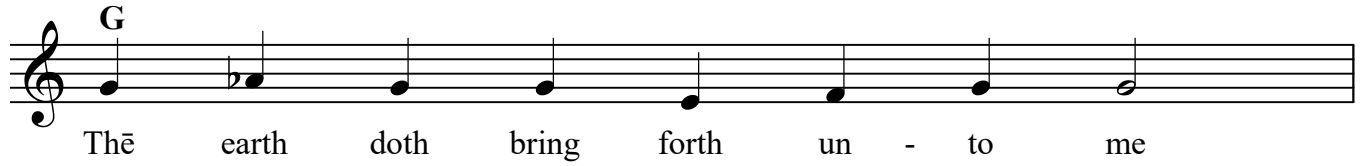


rent me from the glo - ry of God there - with,

Lenten Triodion - Sunday of Forgiveness (Cheese Fare) - Stichera at "O Lord, I have cried" - 2



Lenten Triodion - Sunday of Forgiveness (Cheese Fare) - Stichera at "O Lord, I have cried" - 3



Lenten Triodion - Sunday of Forgiveness (Cheese Fare) - Stichera at "O Lord, I have cried" - 4



nev - er - ceas - ing joy of heart, glo - ry of the just;

glad-ness that hath no end, sweet de - light of proph - - - ets,

hab - i - ta - - - tion of the saints of God,

with the sound of thy leaves pray to the Cre - a - tor of all for me,

to o - pen up to me the gates

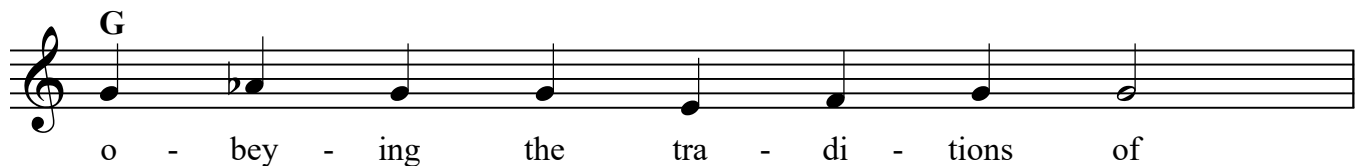
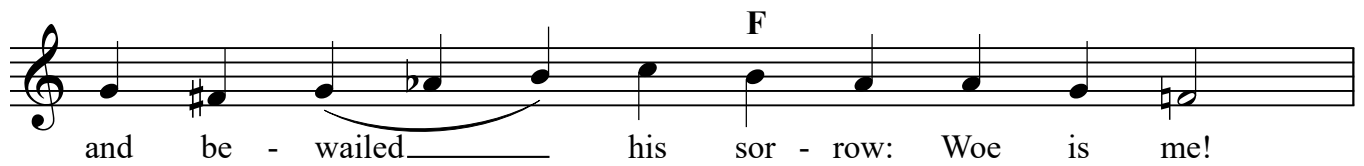
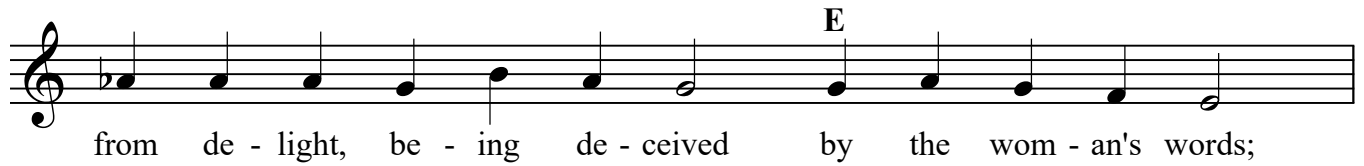
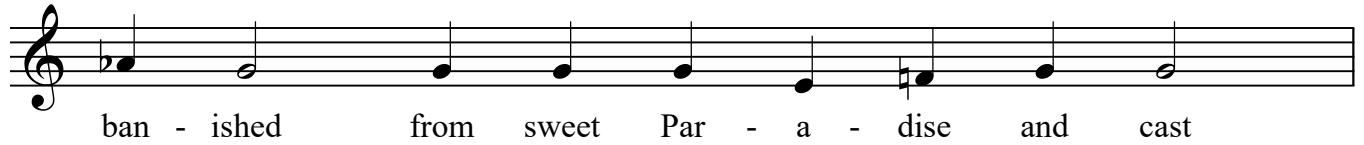
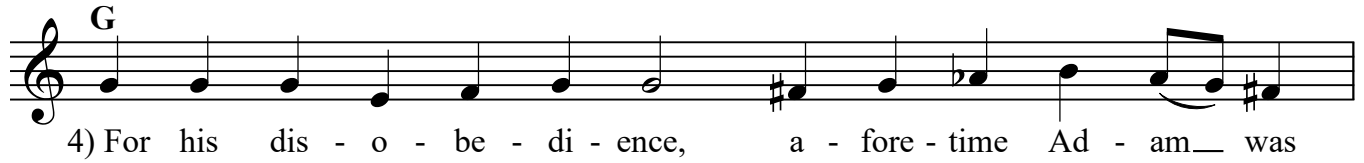
that I by trans - gres - sion closed up be - fore,

that I be deemed wor - - - thy of full par - tak - ing

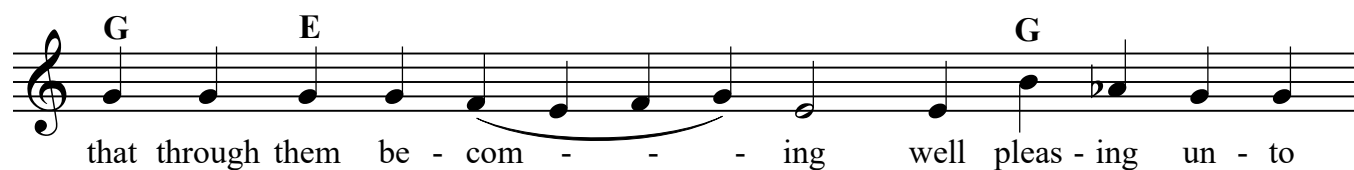
of the Tree of Life and of the joy I de - light - ed in

in thee in the days of old.

Lenten Triodion - Sunday of Forgiveness (Cheese Fare) - Stichera at "O Lord, I have cried" - 5



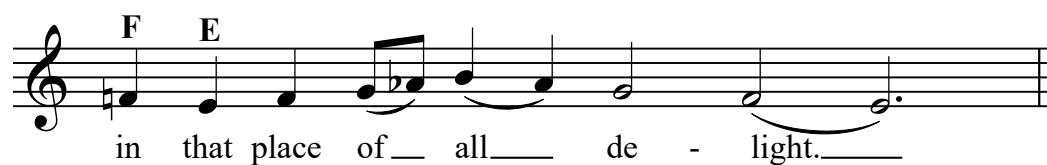
Lenten Triodion - Sunday of Forgiveness (Cheese Fare) - Stichera at "O Lord, I have cried" - 6



that through them be - com - - - ing well pleas - ing un - to



Christ, we might a - gain re - ceive the dwell - ing in Par - a - dise



in that place of all de - light.