

(The Double Katavasiae of the 9th Ode are sung January 1st, 6th, & 14th)

Ninth Ode

(Byzantine notation begins
after the 4th page.)

First Canon

Second Mode (hard chromatic)

Intonation: #6

Allegro ♩=150

Verse #1

Μεγάλυνον ψυχή μου
τὴν τιμιωτέραν

Mag - ni - fy, O my soul, her that is more hon - 'ra - ble and more glo - ri - ous than_ the hosts on high.

Troparion A

Ἀπορεῖ πᾶσα γλῶσσα

Eve - ry tongue is at a loss to praise thee as is due;
e - ven the world-tran-scend-ing in - tel - li - genc - es are
dazed when they seek to praise_ thee, O The - o - to -
kos. But since thou art good, ac - cept our faith, for thou

know - est well our love in - spired_____ by God; for

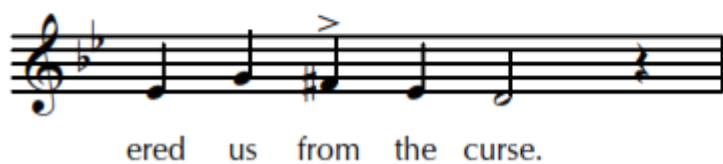
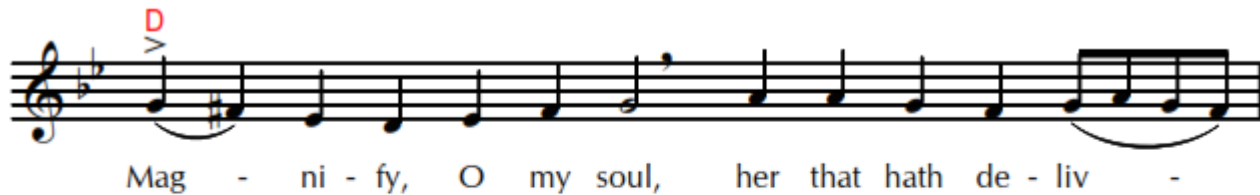
thou art the pro - tec - tress of Chris - tians. Thee_ do we

mag - ni - fy.

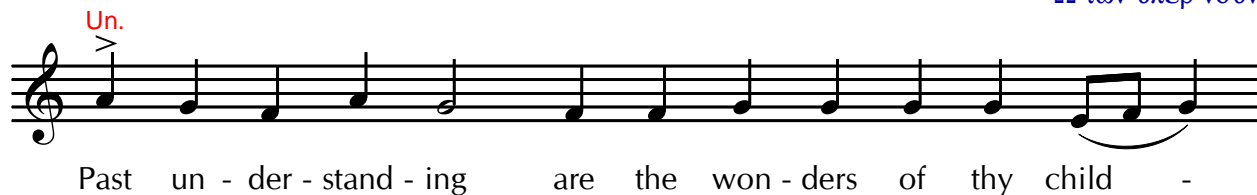
(Continue on the next page.)

Second Canon

Ode 9*



ᾠ τῶν ὑπὲρ νοῦν



* The verses of the second canon are chanted in the hard chromatic scale, even though each one is followed by a troparion in the soft chromatic scale.

(The Double Katavasiae of the 9th Ode are sung January 1st, 6th, & 14th)

Ninth Ode

First Canon

Second Mode (hard chromatic)

150

Ἦχος Πά

Intonation: #6

Verse #1

Μεγάλυνον ψυχή μου
τὴν τιμιωτέραν

M ag - - ni - fy, O my soul, her that is more hon - 'ra - ble and
more glo - ri - ous than the hosts on high.

Troparion A

Ἀπορεῖ πᾶσα γλῶσσα



ve - ry tongue is at a loss to praise thee as is
due; e - ven the world - tran - scend - ing in - tel - li - genc - - es are
dazed when they seek to praise thee, O The - o - to - kos. But
since thou art good, ac - cept our faith, for thou know - est well our

love in - spired _____ by God; for thou art the pro - tec - tress of

Chris - tians. Thee ____ do we mag - ni - fy.

(Continue on the next page.)

Second Canon

Plagal Second Mode (soft chromatic)*

Ἦχος λ π

M ^(π) ag - - ni-fy, O my soul, her that hath de - liv - ered us from
the curse.

Troparion E

π

P ^(M) ast un - der - stand - ing are the won - ders of thy child - -
^(Γ) birth, ^(π) O thou all - pure Bride, O tru - ly bless - ed Moth - - - er!
^(M) Through thee have we found full and per - fect sal - va - - - tion, ^(Γ) and
fram - ing thee a fit - ting hymn of thanks - giv - ing, ^(Γ) bring it as a

* The verses of the second canon are chanted in the hard chromatic scale, even though each one is followed by a troparion in the soft chromatic scale

