

(Double Canon - Sung January 1st, 6th, & 14th)

**Katavasia**

(Byzantine notation begins after the 16th page.)

**First Ode - First Canon**

Intonation: #6

Second Mode (hard chromatic)

**Allegro** ♩=150

Βυθοῦ ἀνεκάλυψε



The Lord, — might - y in wars, un - cov - ered the foun - da - tions



of the deep, and He led His own — through dry land, but



cov - ered their ad - ver - sar - ies in the deep; for —



He is glo - ri - fied.



Third Ode - First Canon

Second Mode (hard chromatic)

Ἰσχὺν ὁ διδοῦς



The Lord, Who grant - eth strength un - to our kings and ex - alt -



eth the horn of His a - noint - ed, is born of a Vir -



gin and com - eth un - to bap - tis - m. Where - fore, let us cry



out, O — ye faith - ful: There is none ho - ly as our



God, and there is none right - eous save Thee, O Lord.

## Third Ode - Second Canon

Plagal Second Mode (soft chromatic)

"Όσοι παλαιῶν



All that are res - cued out of the an - cient mesh - es



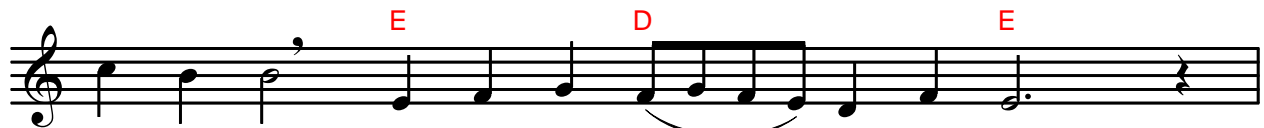
of the de - vour - ing li - ons, whose teeth are bro - ken:



Let us re - joice now, op' - ning our mouths in glad - ness,



weav - ing of words a mel - o - dy for the Word Whose de -



light it is to be - stow gifts up - on us.

Fourth Ode - First Canon

Second Mode (hard chromatic)

Ἀκήκοε Κύριε



He whom Thou didst call the voice\_ of one cry - ing in\_ the



wil - der - ness, O Lord, heard Thy voice, when Thou\_ didst



thun - der up - on\_ man - y wa - ters, bear - ing



wit - ness to Thy Son. And be - ing whol - ly filled\_ with the



Spir - it Who\_ was pre - sent there, he cried: Thou art



Christ, the Wis - dom\_ and Pow - er of God.

## Fourth Ode - Second Canon

Plagal Second Mode (soft chromatic)

Πυρῶ καθαρθεῖς



Cleansed with the torch - light and fire of mys - tic vi -



sion, the Proph - et sing - eth hymns of mor - tals' re - new -



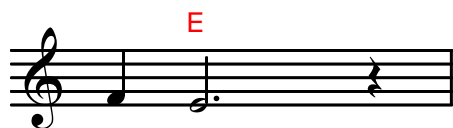
al; His voice he rais - eth, which is moved by the



Spir - it, show - ing the un - ut - t'ra - ble Word's In - car -



na - tion, Who hath whol - ly crushed the do - min - ion of \_\_\_\_\_ the



might - y.

Fifth Ode - First Canon

Second Mode (hard chromatic)

Ἰησοῦς ὁ ζωῆς ἀρχηγός



Je - sus, the Au - thor of life, com - eth to loose the



con - dem - na - tion\_ of Ad - am the first - fash - ioned; and



though as God He need - eth\_ no cleans - ing, for the sake of



him that fell He\_ is cleansed in the Jor - dan:



where - in hav - ing slain the en - mi - ty, He be - stow - eth the



peace that pass - eth all\_ un - der - stand - ing.

## Fifth Ode - Second Canon

Plagal Second Mode (soft chromatic)

Ἐχθροῦ ζοφώδους

Un.

Washed with the cleans-ing and la-ver of the Spir - it from

G E

all the poi - son of the mired and murk - y foe -

Un. G

man, we have been set on a path new and un -

Un. G E

err - ing, lead-ing to in - ac - ces - si - ble joy and

G E

glad - ness found by them a - lone with whom God is rec -

on - ciled.



Sixth Ode - First Canon

Second Mode (hard chromatic)

Ἡ φωνὴ τοῦ Λόγου



The voice\_ of the Word, the lamp\_\_\_ of the Light, the Morn-ing



Star, the Fore - run - ner of the Sun, cri - eth in the



wil - der - ness un - to all\_\_\_ the peo-ples: Re - pent ye and be



cleansed\_ while there is yet time, for be-hold, Christ is come to de -



liv - er the world\_ from cor - rup - tion.

## Sixth Ode - Second Canon

Plagal Second Mode (soft chromatic)

Ἰμερτὸν ἐξέφηνε



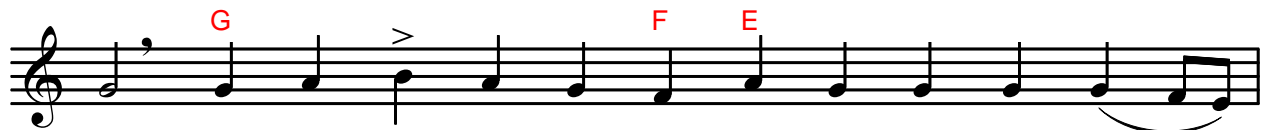
With voice most bliss - ful, the Fa - ther made known clear - ly



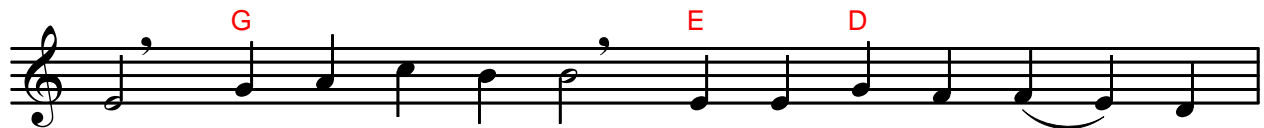
His Be - lov - ed, Whom from the womb He had brought\_ forth.



Yea, He saith, while\_ He is My Child and of My na -



ture, He sprang forth from man-kind, beam - ing bright with splen -



dour, both My Liv - ing Word, and by prov - i - dence\_ a



mor - tal.

Seventh Ode - First Canon

Second Mode (hard chromatic)

Νέους εὐσεβεῖς



As the god - ly Chil - dren stood\_ in\_ the fur - nace of



fire, a whis - tling wind heav - y with dew and the



Di - vine An - gel's de - scent pre - served\_ them free of harm;



where - fore, be - dewed in the flame, they sang with\_ thanks - giv - ing: O



Thou Who art su - preme - ly praised, the Lord and God\_ of our

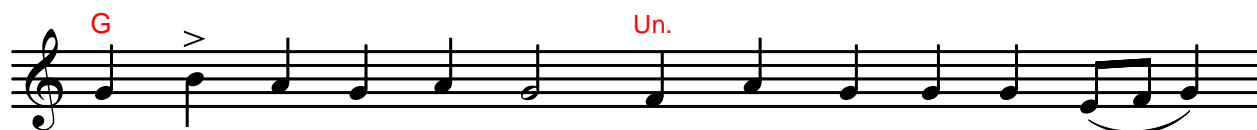


Fa - thers, bless - ed art Thou.

## Seventh Ode - Second Canon

Plagal Second Mode (soft chromatic)

Ἐφλεξε ῥείθρω



The heads of the drag - ons were burned with - in the riv -



er by Him that lulled the up - raised flame of the fur -



nace, which had en - com - passed the right re - li - gious



Chil - dren; He doth wash a - way with the dew of \_\_\_\_\_ the



Spir - it all the fro - ward gloom that sin - ning doth \_\_\_\_\_ en -



gen - der.

Eighth Ode - First Canon

Second Mode (hard chromatic)

Μυστήριον παράδοξον

A strange\_ mys - ter - y was shown in the fur - nace of  
Bab - y - lon when it flowed with dew: That the Jor -  
dan would af - ter - wards re - ceive in its streams the im - ma -  
te - ri - al Fire, and would con - tain the Cre - a - tor  
bap - tized in the flesh, Whom the peo - ples bless and su -

The image shows a musical staff in G minor (one flat) with a treble clef. The melody consists of the following notes: G4 (quarter), A4 (quarter), Bb4 (quarter), C5 (quarter), Bb4 (quarter), A4 (quarter), G4 (quarter), F4 (quarter), E4 (quarter), D4 (half). A slur covers the first five notes (G4 to Bb4). A bracket labeled "Diatonic" spans from the first note to the fifth note. A red "D" is placed above the fifth note (Bb4). A second bracket labeled "Intermediate ending" spans from the sixth note (A4) to the end of the staff. The lyrics "preme - ly ex - alt un - to all the ag - es." are written below the staff, with a horizontal line under "alt" and a fermata symbol above the "D".

*(Continue with "We praise, we bless, . . ." and  
the 8th Ode of the 2nd Canon on the next page.)*

We praise, we bless...\*

Αἰνοῦμεν, εὐλογοῦμεν

Musical notation for the first line of the hymn. It features a treble clef and a single melodic line. Chords F, G, E, and Un. are indicated above the staff. The lyrics are: We praise, we bless, and we wor - ship the Lord.

Eighth Ode - Second Canon

Plagal Second Mode (soft chromatic)

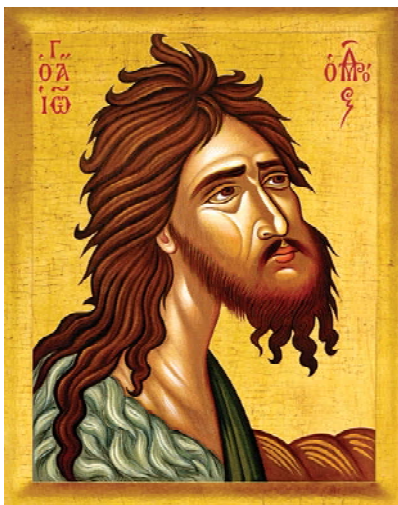
Ἐλευθέρα μὲν

Musical notation for the Eighth Ode - Second Canon, consisting of four lines. Chords G, Un., and E are indicated above the staff. The lyrics are: Now is the cre - a - tion re - stored a - gain to free - dom; they are\_ the sons of light who be - fore were in dark - ness; on - ly he groan - eth who is the prince of dark - ness. Let the once-wretch - ed her - it - age of\_ the

\* On January 1<sup>st</sup> and 6<sup>th</sup> (when both canons of the Theophany Katavasiae are chanted together) the verse "We praise, we bless, and we worship the Lord" is chanted only before the Katavasia of the eighth ode of the first canon and not before the Katavasia of the eighth ode of the second canon.

na - tions ear - nest - ly now bless the Au - thor

of \_\_\_\_\_ their bless - - - ing. \_\_\_\_\_




---

\* This intermediate ending would only be used in the rare event that the entire eighth ode would be chanted after this Katavasia.



**Katavasia**

**First Ode**

**First Canon**

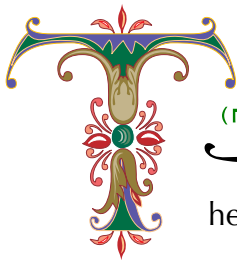
150

Second Mode (hard chromatic)

Intonation: #6

Ἦχος Πά

Βυθοῦ ἀνεκάλυψε



(Π)

he Lord, \_\_ might - - y in wars, un - cov - ered the foun - da -

(N) (Π)

tions of the deep, π and He led His own \_\_ through dry land, π but

cov - ered their ad - ver - sar - ies in the deep; Δ for \_\_ He is glo - ri -

π fied.

## First Ode

## Second (Iambic) Canon

Plagal Second Mode (soft chromatic)

Ἦχος λ π̄ B̄8

Στίβει θαλάσσης



(Δ) s - ra - el walk - eth the (B) sea's un - set - tled (M) surg - - - ing, (Δ)

which is a - gain shown to (B) be dry land and sol - - id; but the

(M) E - gyp - - - tian cap - tains are hid com - plete - - - ly (Δ) in the

light - less deep, in a grave of spread - ing wa - ters, (B) by the might - y

(B) strength of the right hand of (Π) the Mas - ter. (B)

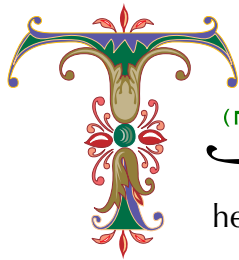
Third Ode

First Canon

Second Mode (hard chromatic)

Ἦχος Πά

Ἰσχὺν ὁ διδούς



(Π) he Lord, Who grant - eth strength un - to our kings Δ (Δ) and ex -  
Ϟ alt - - - eth the horn of His (Π) a - noint - - ed, Δ is born of a  
Ϟ Vir - - gin and com - eth un - to bap - tis - m. π Where-fore, let us cry  
(M) <sup>4</sup> out, O\_\_ ye faith-ful: π (Π) There is none ho - ly as our God, Δ and  
π there is none right - eous save Thee, O Lord.

## Third Ode

## Second Canon

Plagal Second Mode (soft chromatic)

Ἦχος λ̣ π̣ Β̣ϛ

Ὅσοι παλαιῶν



(M) ll that are res - cued out of thē an - cient mesh - -

(Δ) (B) es of the de - vour - ing li - ons, whose teeth are bro - - ken:

(M) (Δ) (M) (Δ) Let us re - joice \_\_\_ now, op' - ning our mouths in glad - - ness,

(Γ) (B) (Δ) weav - ing of words a mel - - - - o - dy for the Word Whose de -

(B) (Π) (B) light it is to be - stow gifts \_\_\_ up - on us.

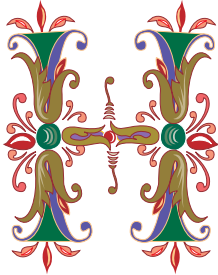
## Fourth Ode

## First Canon

Second Mode (hard chromatic)

Ἦχος Πά

Ἀκήκοε Κύριε



(Π)

e whom Thou didst call the voice of one cry - ing in\_\_ the

(M)

(Π)

wil - der-ness, O Lord, heard Thy voice, when Thou\_ didst thun-der up - on\_\_

man - y wa-ters, bear - ing wit - ness to Thy Son. And be - ing whol-ly

filled\_ with the Spir - it Who\_\_ was pre - sent there, he cried: Thou art

Christ, the Wis-dom\_\_ and Pow - er of God.

## Fourth Ode

## Second Canon

Plagal Second Mode (soft chromatic)

Ἦχος λ̣ π̣ Ḅ8

Πυρῶ καθαρθεῖς



(M)
  
 leansed with the torch-light and fire of mys - tic vi - - - sion,

Δ
  
 the Proph - et sing - eth hymns of mor - tals' re - new - - al; His

(M)
(B)
(M)
(Δ)
  
 voice he rais - - - eth, which is moved by the Spir - - - it, show -

(B)
(Δ)
  
 ing thē un - ut - t'ra - ble Word's In - - car - na - tion, Who hath whol - ly

(B)
(Π)
(B)
Δ
  
 crushed the do - min - ion of \_\_\_ the might - y.

## Fifth Ode

## First Canon

Second Mode (hard chromatic)

Ἦχος Πά

Ἰησοῦς ὁ ζωῆς ἀρχηγός



(□) e - sus, thē Au - - - thor of life, com - eth to loose the

con - dem - na - tion\_ of Ad - am the first - fash - ioned; and though as God

4 (M) (□) He need - eth\_\_ no cleans - ing, for the sake of him that fell He\_\_

is cleansed in the Jor - dan: where - in hav - ing slain thē en - mi - ty, Δ

(Δ) He be - stow - - eth the peace that pass - eth all\_\_ un - der - stand - ing. π

## Fifth Ode

## Second Canon

Plagal Second Mode (soft chromatic)

Ἦχος λ̣ Β̣

Ἐχθροῦ ζοφώδους



(M) | 4 | | | | | | | | | | |

ashed with the cleans-ing and la-ver of the Spir- - - it

(Δ) | | | | | | | | | | | |

from all the poi- - - son of the mired and murk- y foe- - -

(M) | | | | | | | | | | | |

man, we have been set\_\_\_ on a path new and un- err- -

(Δ) | | | | | | | | | | | |

ing, lead- ing to in- ac- ces- si- ble joy\_\_ and glad- ness

(Δ) | | | | | | | | | | | |

found by them a- lone with whom God is rec- - - on- - - ciled.



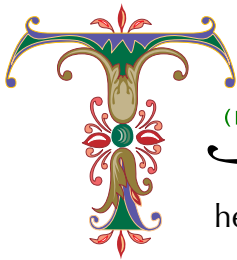
## Sixth Ode

## First Canon

Second Mode (hard chromatic)

Ἦχος Πά

Ἡ φωνὴ τοῦ Λόγου



(Π) he voice\_\_ of the Word, the lamp\_\_ of the Light, the Morn-  
 ing Star, the Fore - - run - - ner of the Sun, cri - eth in the wil - der - ness  
 (M) un - to all\_\_ the peo - ples: Re - pent ye and be cleansed while there  
 is yet time, Δ for be - hold, Christ is come to de - liv - er the world\_\_  
 from cor - rup - - tion. π

## Sixth Ode

## Second Canon

Plagal Second Mode (soft chromatic)

Ἦχος λ̣ π̣ Ḅ8

Ἰμερτὸν ἐξέφηνε



(M) 4  
ith voice most bliss - ful, the Fa - ther made known clear - - ly

(B) 4  
His Be - lov - ed, Whom from the womb He had brought\_ forth. Yea, He

(M) (Δ)  
saith, while\_\_\_ He is My Child and of My na - - - ture, He

(Γ) (B) (Δ)  
sprang forth from man-kind, beam - ing bright with splen - - - dour, both My

(B) (Π) 4 (B)  
Liv - ing Word, and by prov - i - dence\_\_\_ a mor - tal.

## Seventh Ode

## First Canon

Second Mode (hard chromatic)

Ἦχος Πά

Νέους εὐσεβεῖς



(Π)  
 s the god - ly Chil - dren stood\_\_ in\_\_ the fur - nace of fire,  
(Μ) (Π)  
 a whis - tling wind heav - - - y with dew and the Di - vine An -  
 gel's de - scent pre - served\_\_ them free of harm; where - fore, be - dewed in the  
(Μ) (Π)  
 flame, they sang with\_\_ thanks - giv - ing: O Thou Who art su - preme - ly praised,  
(Δ) (Π)  
 the Lord and God\_\_ of our Fa - thers, bless - ed art Thou.

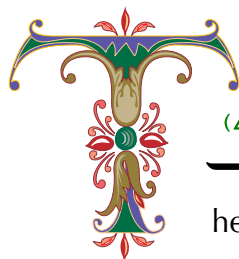
## Seventh Ode

## Second Canon

Plagal Second Mode (soft chromatic)

Ἦχος λ̣ π̣ Β̣ϛ

Ἐφλεξε ρείθρω



(Δ) (M)  
Ⲃ he heads of the drag - ons were burned with - in the riv - - -  
Ⲃ (B)  
er by Him that lulled thē up - raised flame of the fur - - - nace,  
Ⲃ (M)  
which had en - com - - passed the right re - li - gious Chil - - dren;  
Ⲃ (Δ) (B) (Δ)  
He doth wash a - way with the dew of\_\_ the Spir - it all the  
Ⲃ (B) (Π) (B)  
fro - ward gloom that sin - ning doth\_\_ en - gen - der. Ⲃ

**Eighth Ode**

**First Canon**

Second Mode (hard chromatic)

Ἦχος Πά

Αἰνοῦμεν, εὐλογοῦμεν

**W** <sup>(Π)</sup> e praise, we bless, and we wor-ship the Lord. π

Μυστήριον παράδοξον

**A** <sup>(Ζ)</sup> <sup>(Π)</sup> strange mys-ter-y was shown in the fur-nace of Bab-y-  
<sup>(Ζ)</sup> <sup>(Π)</sup> lon when it flowed with dew: π That the Jor- - dan would af-ter-wards  
 re-ceive <sup>Δ</sup> in its streams thē im-ma-te-ri-al Fire, π and would con-  
 tain the Cre- a- tor <sup>(Ζ)</sup> <sup>(Π)</sup> bap-tized in the flesh, π Whom the peo-ples bless and  
 su- preme- - ly <sup>ο</sup> <sup>Γ</sup> <sup>\*(Π)</sup> ex- alt <sup>ο</sup> <sup>Γ</sup> un- to all thē ag- es. π

*\* Finale:* <sup>(Π)</sup> <sup>4</sup> <sup>(Π)</sup> π  
π alt un- to all thē ag- - es.

*This finale is used only from January 2<sup>nd</sup> to January 5<sup>th</sup>, i.e., when only the first canon is chanted.*

## Eighth Ode

## Second Canon

Plagal Second Mode (soft chromatic)

Ἦχος λ̣ π̣ Β̣ ς̣

Αἰνοῦμεν, εὐλογοῦμεν

**W** <sup>(Γ)</sup> <sup>(Δ)</sup> <sup>(B)</sup> <sup>(M)</sup>  
 e praise, we bless, and we wor- ship the Lord. ⲁ

**N** <sup>(Δ)</sup> <sup>4</sup> <sup>(M)</sup> Ελευθέρα μὲν  
 ow is the cre- a- tion re-stored a- gain to free- - dom; ⲁ

<sup>(Δ)</sup> <sup>(B)</sup> <sup>(B)</sup>  
 they are\_ the sons of light who be- fore were in dark- - ness; ⲁ on -

<sup>(Δ)</sup>  
 ly he groan- - eth who is the prince of dark- - ness. ⲁ Let the

<sup>(B)</sup> <sup>(Δ)</sup>  
 once- wretch- ed her- it- age of\_ the na- tions ear- nest- ly now

<sup>(B)</sup> <sup>\*</sup> <sup>(M)</sup> <sup>(Γ)</sup> <sup>(Δ)</sup>  
 bless thē Au- thor ⲁ of\_ their bless- - ing. ⲁ