

*(Sung January 7th - 13th)*

## First Ode - Second (Iambic) Canon

Intonation: #17 or #18

Plagal Second Mode (soft chromatic)  
*(Soft chromatic is sung with A-flat)*

Στίβει θαλάσσης

Is - ra - el walk - eth the sea's un - set - tled surg - ing,

which is a - gain shown to be dry land and sol - id;

but the E - gyp - tian cap - tains are hid com - plete -

ly in the light - less deep, in a grave of spread - ing

wa - ters, by the might - y strength of the right hand of the

Mas - ter.

## Third Ode - Second Canon

Plagal Second Mode (soft chromatic)

"Όσοι παλαιῶν



All that are res - cued out of the an - cient mesh - es



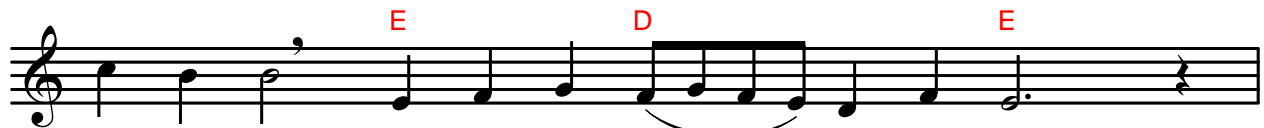
of the de - vour - ing li - ons, whose teeth are bro - ken:



Let us re - joice now, op' - ning our mouths in glad - ness,



weav - ing of words a mel - o - dy for the Word Whose de -



light it is to be - stow gifts up - on us.

## Fourth Ode - Second Canon

Plagal Second Mode (soft chromatic)

Πυρῶ καθαρθεῖς



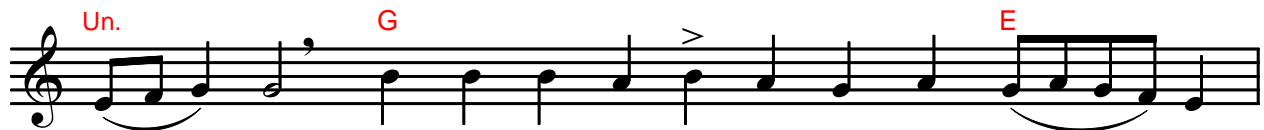
Cleansed with the torch - light and fire of mys - tic vi -



sion, the Proph - et sing - eth hymns of mor - tals' re - new -



al; His voice he rais - eth, which is moved by the



Spir - it, show - ing the un - ut - t'ra - ble Word's In - car -



na - tion, Who hath whol - ly crushed the do - min - ion of \_\_\_\_\_ the



might - y.

## Fifth Ode - Second Canon

Plagal Second Mode (soft chromatic)

Ἐχθροῦ ζοφώδους

Un.

Washed with the cleans-ing and la-ver of the Spir - it from

G E

all the poi - son of the mired and murk - y foe -

Un. G

man, we have been set\_\_\_\_\_ on a path new and un -

Un. G E

err - ing, lead-ing to in - ac - ces - si - ble joy\_\_\_\_\_ and

G E

glad - ness found by them a - lone with whom God is rec -

on - ciled.

## Sixth Ode - Second Canon

Plagal Second Mode (soft chromatic)

Ἰμερτὸν ἐξέφηνε



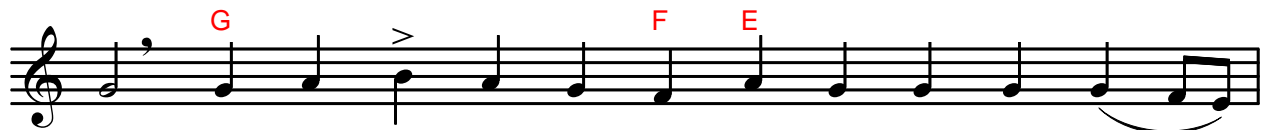
With voice most bliss - ful, the Fa - ther made known clear - ly



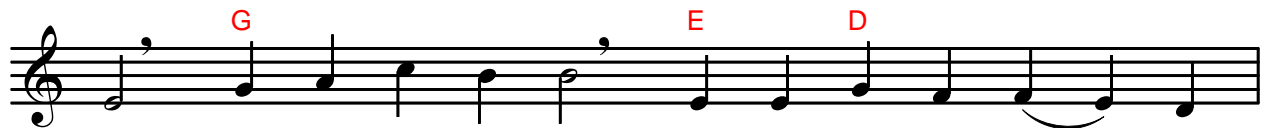
His Be - lov - ed, Whom from the womb He had brought\_ forth.



Yea, He saith, while\_ He is My Child and of My na -



ture, He sprang forth from man-kind, beam - ing bright with splen -



dour, both My Liv - ing Word, and by prov - i - dence\_ a



mor - tal.

## Seventh Ode - Second Canon

Plagal Second Mode (soft chromatic)

Ἐφλεξε ῥείθρω



The heads of the drag - ons were burned with - in the riv -



er by Him that lulled the up - raised flame of the fur -



nace, which had en - com - passed the right re - li - gious



Chil - dren; He doth wash a - way with the dew of \_\_\_\_\_ the



Spir - it all the fro - ward gloom that sin - ning doth \_\_\_\_\_ en -



gen - der.

We praise, we bless...\*

Αἰνοῦμεν, εὐλογοῦμεν

Musical notation for the first line of the hymn. It features a treble clef and a single staff. The melody consists of quarter and eighth notes. Chords F and G are indicated above the first two notes. A fermata is placed over the eighth note of the second measure. Chords E and Un. are indicated above the notes in the third measure. The lyrics 'We praise, we bless, and we wor - ship the Lord.' are written below the staff.

Eighth Ode - Second Canon

Plagal Second Mode (soft chromatic)

Ἐλευθέρα μὲν

Musical notation for the Eighth Ode - Second Canon, consisting of four lines. Each line has a treble clef and a single staff. The melody is written in a soft chromatic style. Chords G and Un. are indicated above the notes. The lyrics are: 'Now is the cre - a - tion re - stored a - gain to free - dom; they are\_ the sons of light who be - fore were in dark - ness; on - ly he groan - eth who is the prince of dark - ness. Let the once-wretch - ed her - it - age of\_ the'. The lyrics are written below the staff.

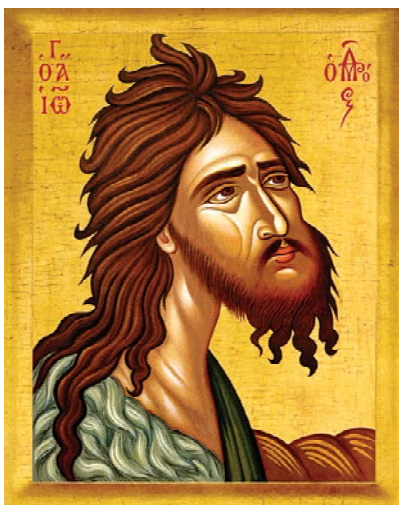
na - tions ear - nest - ly now bless the Au - thor

**Intermediate ending\***

of \_\_\_\_\_ their bless - ing.

**Finale:**

of \_\_\_\_\_ their bless - - - ing. \_\_\_\_\_



\* This intermediate ending would only be used in the rare event that the entire eighth ode would be chanted after this Katavasia.



*(Sung January 7th - 13)***First Ode****Second (Iambic) Canon**

Plagal Second Mode (soft chromatic)

Ἦχος λ π̄ B̄8

Στίβει θαλάσσης



(Δ) ⚠  
 s - ra - el walk - eth the sea's un - set - tled surg - - - ing,

(B) ⚠  
 which is a - gain shown to be dry land and sol - - id; but the

(M) ⚠ (Δ)  
 E - gyp - - - tian cap - tains are hid com - plete - - - ly in the

(B) ⚠ (Δ)  
 light - less deep, in a grave of spread - ing wa - ters, by the might - y

(B) ⚠ (Π) <sup>4</sup> (B)  
 strength of the right hand of      the Mas - ter.

## Third Ode

## Second Canon

Plagal Second Mode (soft chromatic)

Ἦχος λ̣ π̣ Β̣ϛ

Ὅσοι παλαιῶν



(M) ll that are res - cued out of thē an - cient mesh - -

(Δ) (B) es of the de - vour - ing li - ons, whose teeth are bro - - ken:

(M) (Δ) (M) (Δ) Let us re - joice \_\_\_ now, op' - ning our mouths in glad - - ness,

(Γ) (B) (Δ) weav - ing of words a mel - - - - o - dy for the Word Whose de -

(B) (Π) (B) light it is to be - stow gifts \_\_\_ up - on us.

## Fourth Ode

## Second Canon

Plagal Second Mode (soft chromatic)

Ἦχος λ̣ π̣ Ḅ8

Πυρῶ καθαρθεῖς



(M)
  
 leansed with the torch-light and fire of mys - tic vi - - - sion,

⚠
  
 the Proph - et sing - eth hymns of mor - tals' re - new - - al; His

(M)
(B)
(M)
(Δ)
  
 voice he rais - - - eth, which is moved by the Spir - - - it, show -

(B)
(B)
(Δ)
  
 ing thē un - ut - t'ra - ble Word's In - - car - na - tion, Who hath whol - ly

(B)
(Π)
(B)
⚠
  
 crushed the do - min - ion of \_\_\_ the might - y.

## Fifth Ode

## Second Canon

Plagal Second Mode (soft chromatic)

Ἦχος λ̣ Β̣

Ἐχθροῦ ζοφώδους



(M) | 4 | | | | | | | | | | | | | | | | | | | | | | | | | | | | | | | | | | | | | | | | | | | | | | | | | | | | | | | | | | | | | | | | | | | | | | | | | | | | | | | | | | | | | | | | | | | | | | | | | | | | | | | | | | | | | | | | | | | | | | | | | | | | | | | | | | | | | | | | | | | | | | | | | | | | | | | | | | | | | | | | | | | | | | | | | | | | | | | | | | | | | | | | | | | | | | | | | | | | | | | | | | | | | | | | | | | | | | | | | | | | | | | | | | | | | | | | | | | | | | | | | | | | | | | | | | | | | | | | | | | | | | | | | | | | | | | | | | | | | | | | | | | | | | | | | | | | | | | | | | | | | | | | | | | | | | | | | | | | | | | | | | | | | | | | | | | | | | | | | | | | | | | | | | | | | | | | | | | | | | | | | | | | | | | | | | | | | | | | | | | | | | | | | | | | | | | | | | | | | | | | | | | | | | | | | | | | | | | | | | | | | | | | | | | | | | | | | | | | | | | | | | | | | | | | | | | | | | | | | | | | | | | | | | | | | | | | | | | | | | | | | | | | | | | | | | | | | | | | | | | | | | | | | | | | | | | | | | | | | | | | | | | | | | | | | | | | | | | | | | | | | | | | | | | | | | | | | | | | | | | | | | | | | | | | | | | | | | | |

## Sixth Ode

## Second Canon

Plagal Second Mode (soft chromatic)

Ἦχος λ̣ π̣ Ḅ8

Ἰμερτὸν ἐξέφηνε



(M) 4  
 ith voice most bliss - ful, the Fa - ther made known clear - - ly

(B) 4  
 His Be - lov - ed, Whom from the womb He had brought\_ forth. Yea, He

(M) (Δ)  
 saith, while\_\_\_ He is My Child and of My na - - - ture, He

(Γ) (B) (Δ)  
 sprang forth from man - kind, beam - ing bright with splen - - - dour, both My

(B) (Π) 4 (B)  
 Liv - ing Word, and by prov - i - dence\_\_\_ a mor - tal.

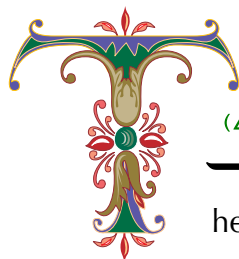
## Seventh Ode

## Second Canon

Plagal Second Mode (soft chromatic)

Ἦχος λ̣ π̣ Β̣ϛ

Ἐφλεξε ρείθρω



(Δ) (M)  
Ⲃ he heads of the drag - ons were burned with - in the riv - - -  
Ⲃ (B)  
er by Him that lulled thē up - raised flame of the fur - - - nace,  
Ⲃ (M)  
which had en - com - - passed the right re - li - gious Chil - - dren;  
Ⲃ (Δ) (B) (Δ)  
He doth wash a - way with the dew of\_\_ the Spir - it all the  
Ⲃ (B) (Π) (B)  
fro - ward gloom that sin - ning doth\_\_ en - gen - der. Ⲃ

