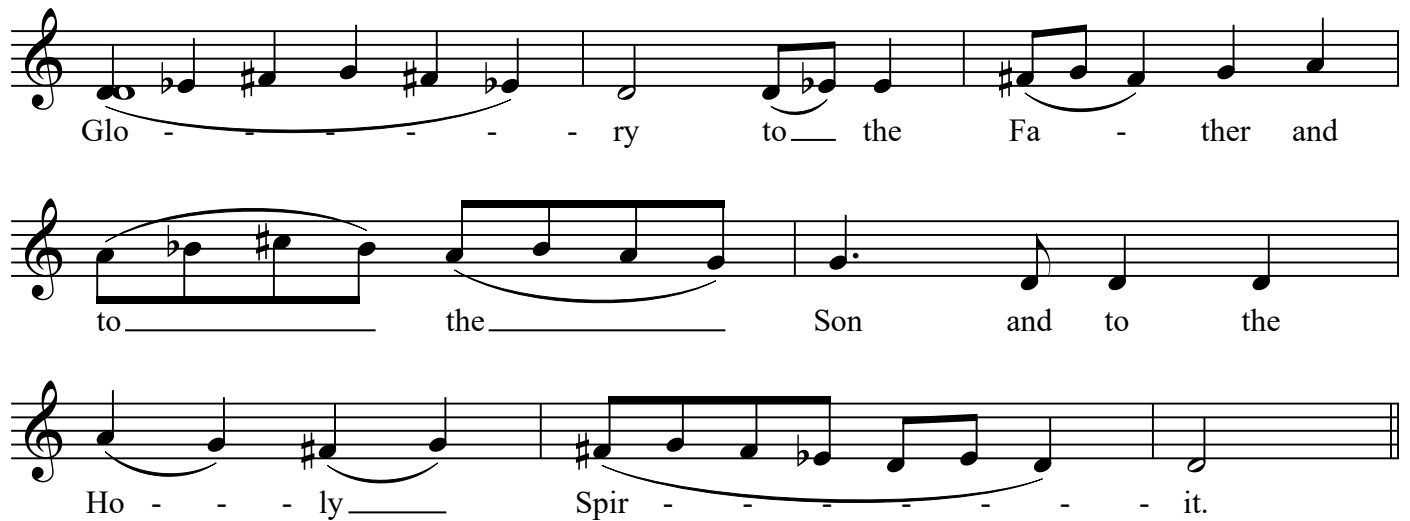
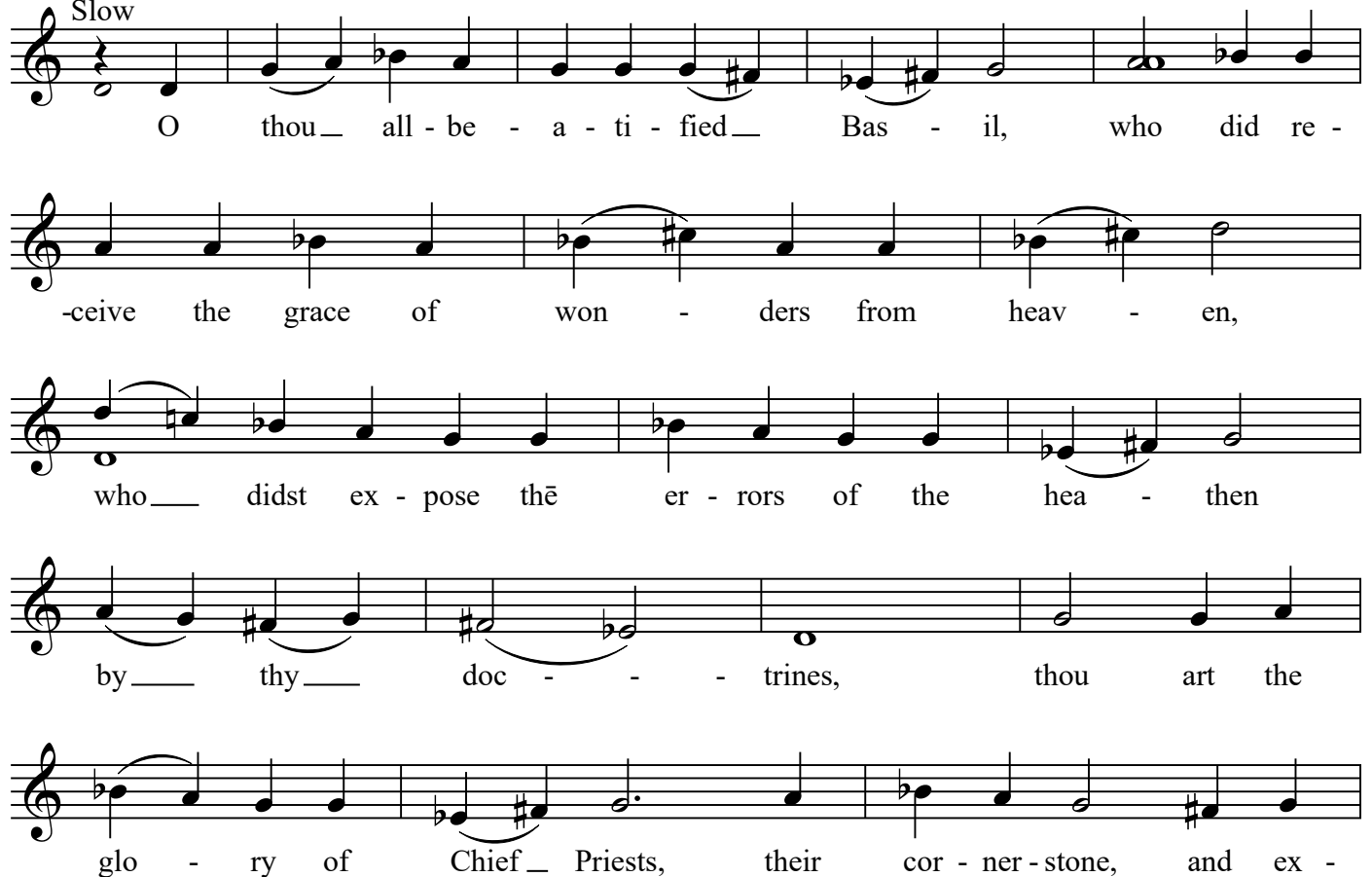


Tone 6

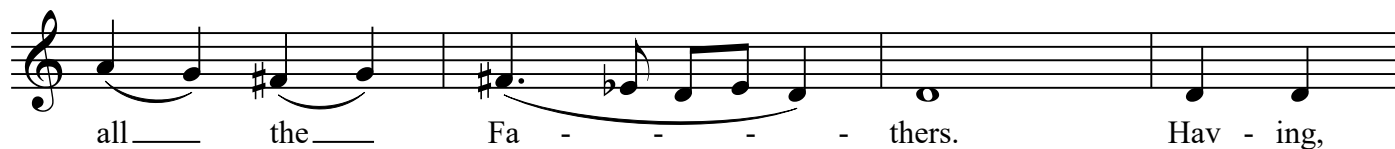
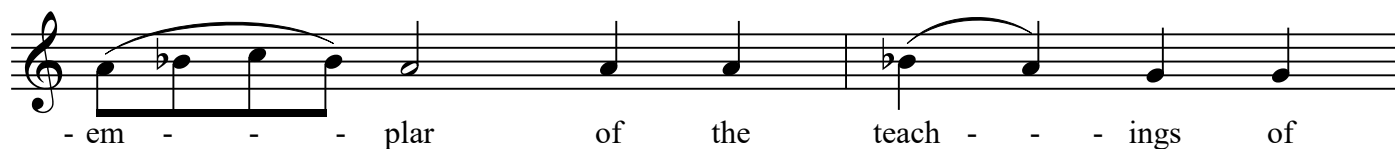


Glo - ry to the Fa - ther and
to the Son and to the
Ho - ly Spir - it.

Slow



O thou all-be-a-ti-fied Bas-il, who did re -
-ceive the grace of won - ders from heav - en,
who didst ex - pose the er - rors of the hea - then
by thy doc - trines, thou art the
glo - ry of Chief Priests, their cor - ner - stone, and ex -



Both Now - Tone 8

