

February 2nd

Presentation (Meeting) of our Lord in the Temple

Full 9th Ode with Magnifications

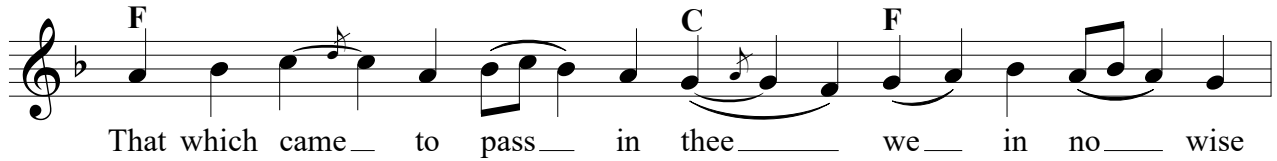
(The verses are adapted from Simonos Petras)

(Byzantine version is after page 10)

Byzantine Chant Tone 3
Third Mode

Magnifications

Chadi Karam



F C F

That which came to pass in thee we in no wise



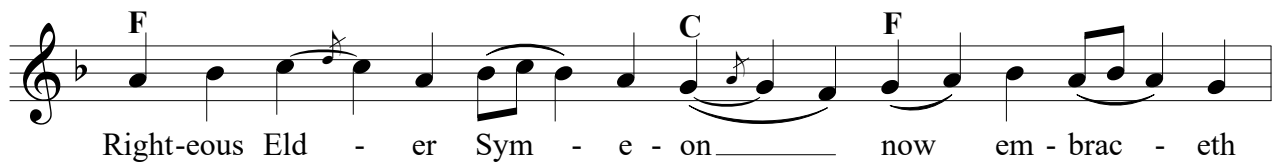
Un. F C

com - pre - hend, not thē An - gels, nor we men,



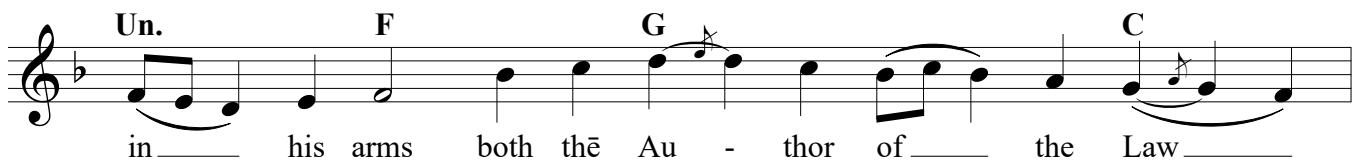
F Un. F

O thou Vir - gin Moth - er pure.



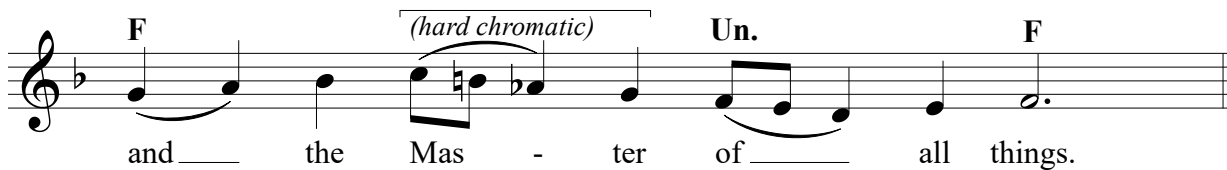
F C F

Right-eous Eld - er Sym - e - on now em - brac - eth



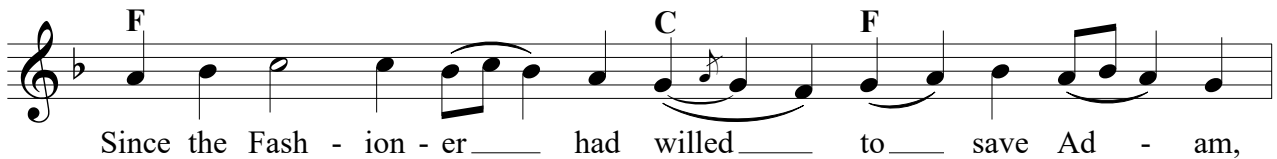
Un. F G C

in his arms both thē Au - thor of the Law



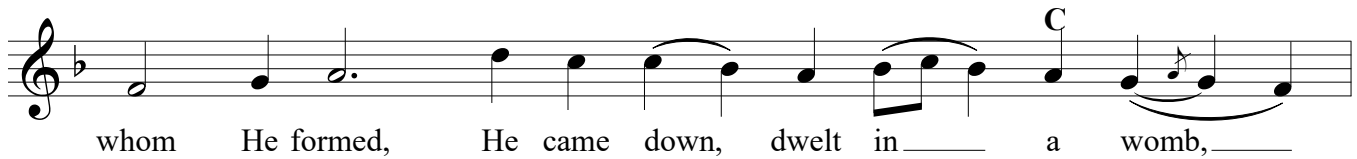
F (hard chromatic) Un. F

and the Mas - ter of all things.



F C F

Since the Fash - ion - er had willed to save Ad - am,



C

whom He formed, He came down, dwelt in a womb,



F Un. F

O thou Vir - gin chaste and pure.

February 2nd - Presentation of our Lord in the Temple - Full 9th Ode with magnifications - 2

All the race of mor - tal men bless - eth thee, O
 Maid most pure, glo - ri - fy - ing thee with faith
 as the Moth - er of our God.
 Come, be - hold ye Christ the Lord and the Mas - ter
 of all things; Him doth Sym - e - on now hold
 in the Tem - ple on this day.
 Thou dost look up - on the earth and Thou caus - est
 it to quake. How then doth a weak old man
 hold Thee in his ag - ed arms?

February 2nd - Presentation of our Lord in the Temple - Full 9th Ode with magnifications - 3

Sym - e - on lived man - y years _____ till _____ he
 had _____ be - held _____ the Christ. And he cried _____ out un - to
 Him: Now _____ do I _____ seek my _____ re - lease.
 Thou, O Maid - en Mar - i - am, _____ art _____ in
 truth _____ the mys - tic tongs, who with - in _____ thy bless - ed
 womb _____ hast _____ con - ceived thē Em - ber, Christ.
 Will - ing - ly _____ wast Thou _____ made man, _____ Who _____ art
 God _____ be - fore _____ all time; to the Tem - ple Thou _____ art
 brought as _____ a babe _____ of for - ty days.

February 2nd - Presentation of our Lord in the Temple - Full 9th Ode with magnifications - 4

When the Mas - ter of all things came down from the
 Heav - ens' heights, bless - ed Sym - e - on the priest
 took Him up in - to his arms.
 O il - lu - mi - nate my soul and my sense of
 sight, O Lord, so that I may clear - ly see
 and pro - claim *(hard chromatic)* Thee as my God.

Heirmos
 In the shad - ow and let - ter of the Law, let us the
 faith - ful con - tem - plate a pre - fig - ur - ing: Ev - 'ry
 male child that o - pen - eth the womb is ho - ly un - to God. There - fore

February 2nd - Presentation of our Lord in the Temple - Full 9th Ode with magnifications - 5

do we mag-ni - fy the first - born Word, the Son of the Fa - ther Who

is with - out be - gin - ning, the first-born Child of a Moth -

- er who hath not known wed - lock.

O Thou Vir - gin Moth - er pure, where - fore to the

Tem - ple's courts dost thou bring a new - born babe

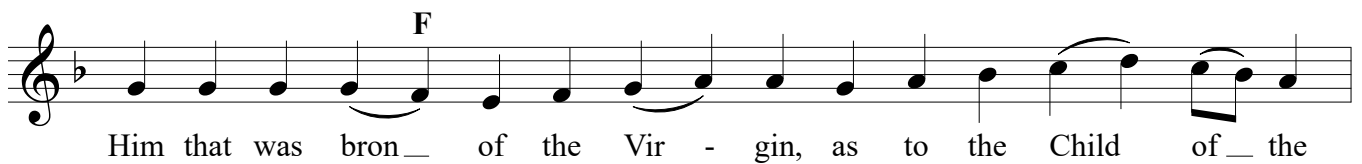
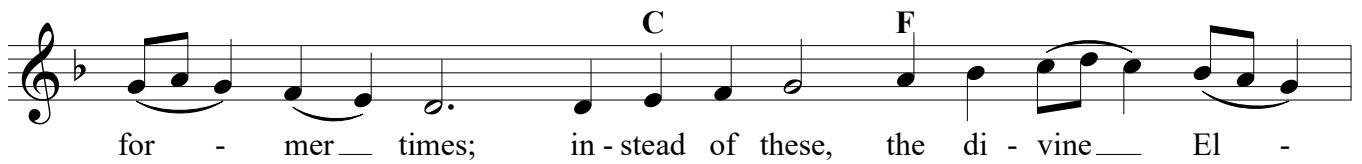
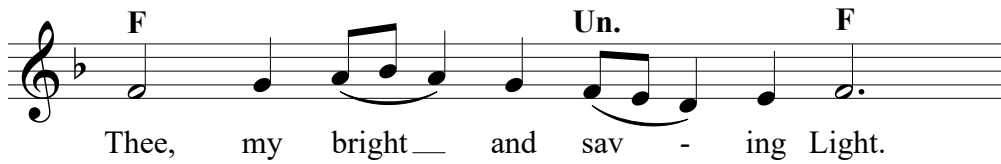
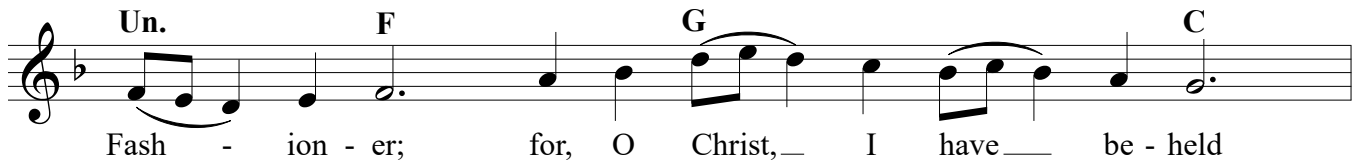
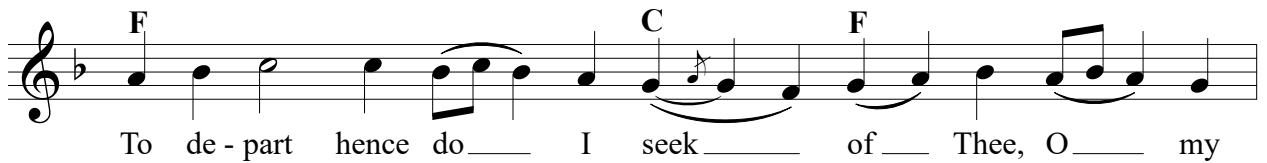
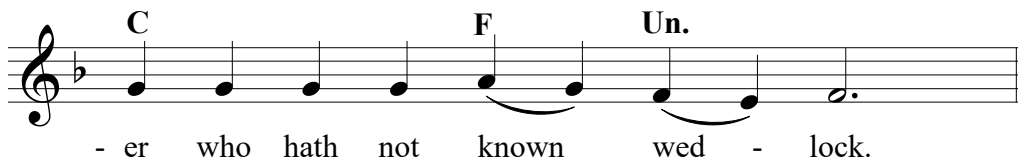
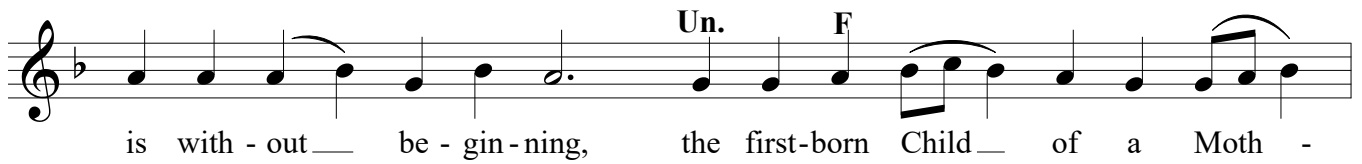
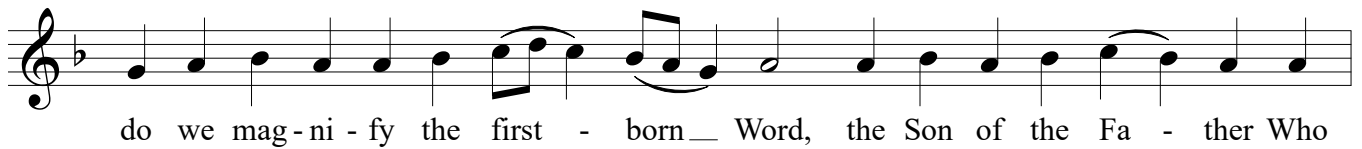
to thē arms of Sym - e - on?

In the shad - ow and let - ter of the Law, let us the

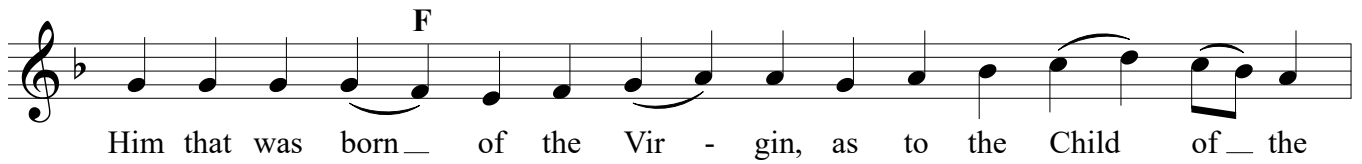
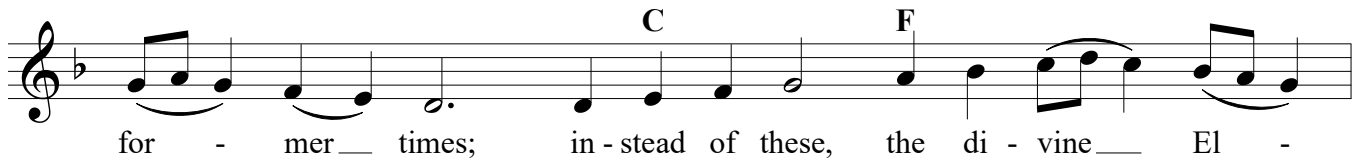
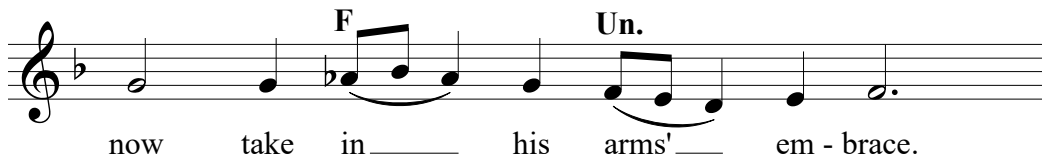
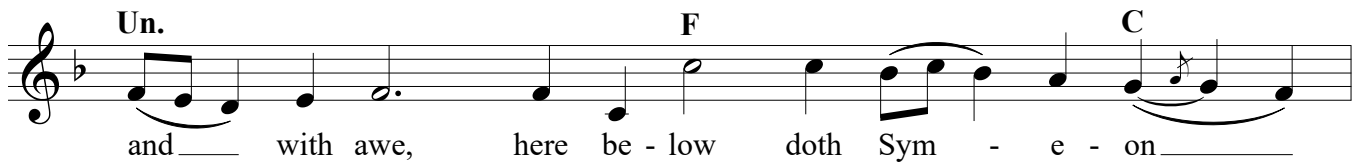
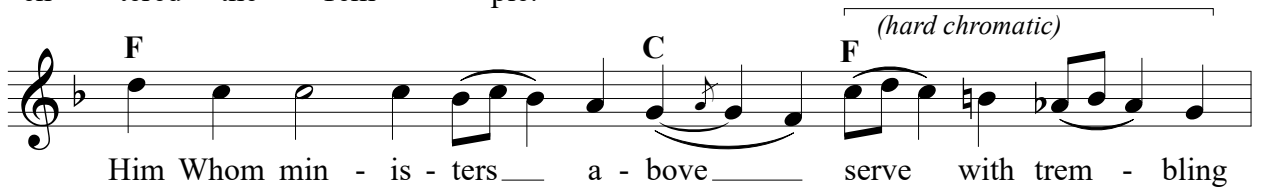
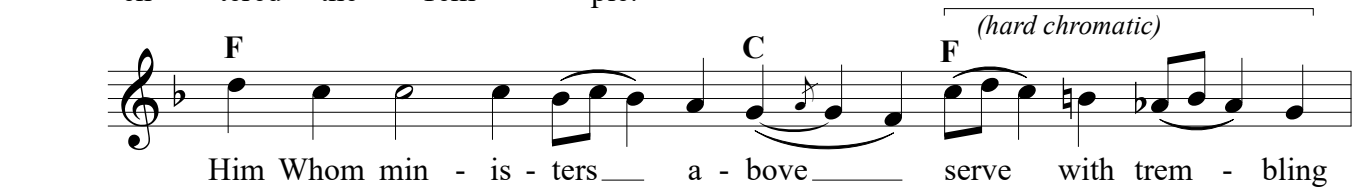
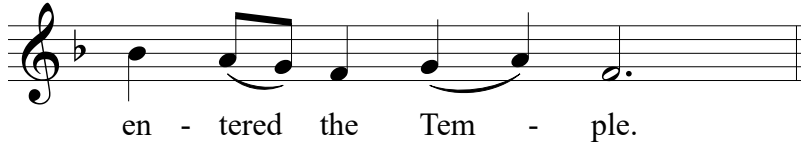
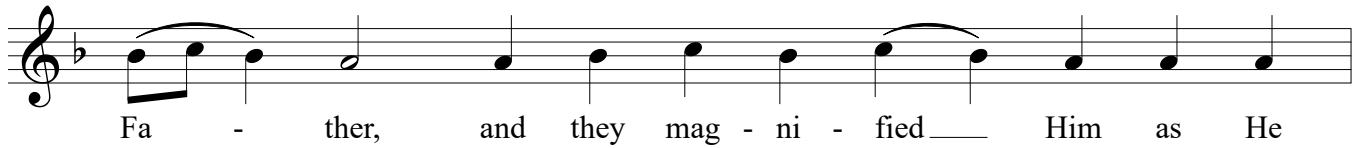
faith - ful con - tem - plate a pre - fig - ur - ing: Ev - 'ry

male child that o - pen - eth the womb is ho - ly un - to God. There - fore

February 2nd - Presentation of our Lord in the Temple - Full 9th Ode with magnifications - 6



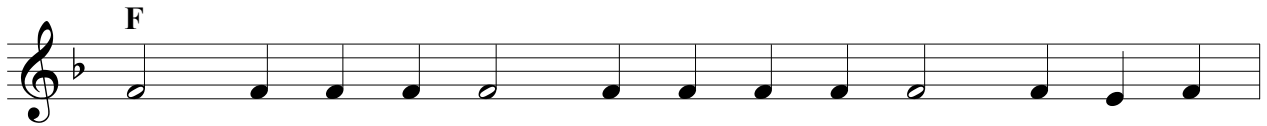
February 2nd - Presentation of our Lord in the Temple - Full 9th Ode with magnifications - 7



February 2nd - Presentation of our Lord in the Temple - Full 9th Ode with magnifications - 8



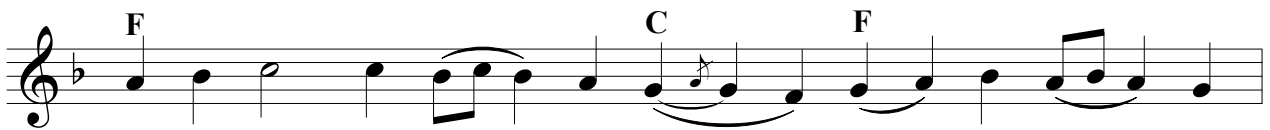
en - tered the Tem - ple.



Glo - ry to the Fa - ther, and to the Son, and to the



Ho - ly Spir - it.



In Thy na - ture, Thou art One, yet in Per - sons,



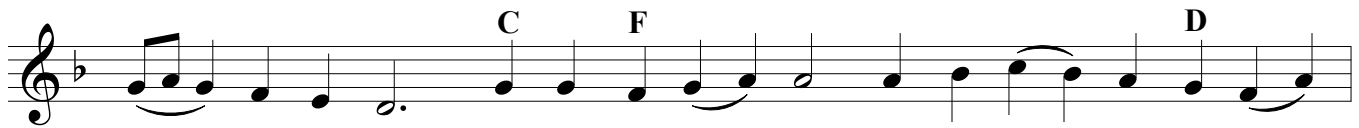
Thou art Three: Keep Thy ser - vant from all harm,



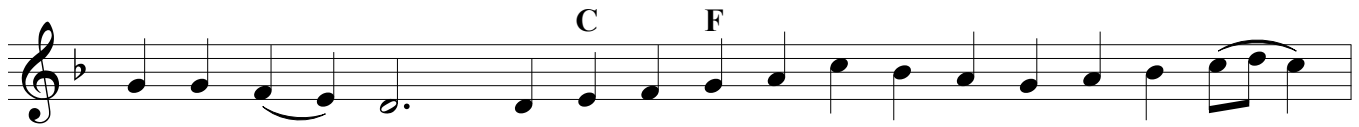
who be - lieve and trust in Thee.



Thē El - der cried: Thou hast re - stored un - to me the joy of Thy sal -



- va - tion, O Christ; re - ceive Thy ser - vant, who hath wea - ried him - self



in the shad - ow, to be a new in - i - ti - ate and sa - cred her -



- ald of Grace, as he mag - ni - fi - eth Thee with praise.

February 2nd - Presentation of our Lord in the Temple - Full 9th Ode with magnifications - 9

Un.
 Both now and ev - er, and un - to ag - es of ag - es. A - men.

F C F
 O The - o - to - kos, thou hope of all

Un. F C
 Chris - tians: Keep and shel - ter and pre - serve

F Un. F
 them that set their hope on thee.

Act - ing as a di - vine in - ter - pret - er, the chaste,

D C F
 hal - lowed, and ven - 'ra - ble An - na o - pen - ly con - fessed the

D
 Mas - ter with all re - 'rence in the Tem - ple;

C F
 and pro - claim - ing the The - o - to - kos, she mag - ni -

- fied her be - fore all them that were pres - ent.

February 2nd - Presentation of our Lord in the Temple - Full 9th Ode with magnifications - 10

85

O The - o - to - kos, thou hope of
 all Chris - tians: Keep and shel - ter and pre -
 - serve them that set their hope on thee.
 In the shad - ow and let - ter of the Law, let us the
 faith - ful con - tem - plate a pre - fig - ur - ing: Ev - 'ry
 male child that o - pen - eth the womb is ho - ly un - to God. There - fore
 do we mag - ni - fy the first - born Word, the Son of the Fa - ther Who
 is with - out be - gin - ning, the first - born Child of a Moth -
 - er who hath not known wed - lock.

Ode 9

(The verses are adapted from Simonos Petras)

T^(Γ) — — | — — — — | — — — — | — — — — | — — — —
hat which came _____ to pass in thee _____ we ___ in

| — — — — | — — — — | — — — — | — — — — | — — — — | — — — —
no wise com- pre- hend, ^(M) ^(Γ) ^ⲁ not the An- - gels, nor we

| — — — — | — — — — | — — — — | — — — — | — — — — | — — — —
men, _____ O ___ thou Vir-gin Moth- er pure. ^(N) ^(Γ) ^(M) ^(Γ) ^ⲁ

R^(Γ) — — — — | — — — — | — — — — | — — — — | — — — —
ight- eous El- - der Sym- e- on _____ now ___ em-

| — — — — | — — — — | — — — — | — — — — | — — — — | — — — —
brac-eth in ___ his arms ^(M) ^(Γ) ^ⲁ both the Au- - thor of the Law ^(Δ) ^(N) ___

| — — — — | — — — — | — — — — | — — — — | — — — — | — — — —
___ and ___ the Mas- ter of ___ all things. ^(Γ) ^(M) ^(Γ) ^ⲁ

S^(Γ) — — — — | — — — — | — — — — | — — — — | — — — — | — — — —
ince the Fash- ion- er had willed _____ to ___ save Ad- am,

| — — — — | — — — — | — — — — | — — — — | — — — — | — — — —
whom He formed, ^(Δ) ^(N) ^(Γ) ^ⲁ He came down, ___ dwelt in ___ thy womb, _____ O ___

| — — — — | — — — — | — — — — | — — — — | — — — — | — — — —
thou Vir- gin chaste and pure. ^(M) ^(Γ) ^ⲁ

All the race of mor- - tal men ____ bless- - eth thee, O Maid

____ most pure, ^Ⲛ glo- ri- fy- - ing thee ____ with faith ____ as

the Moth- - - er of ____ our God. Ⲛ

Come, be- hold __ ye Christ __ the Lord ____ and ____ the Mas- -

ter of ____ all things; ^Ⲛ Him doth Sym- - e- on ____ now hold ____ in

the Tem- - ple on this day. Ⲛ

Thou dost look up- on the earth ____ and Thou caus- est

it ____ to quake. ^Ⲛ How then doth a weak _ old man hold __ Thee in

his ag- ed arms? Ⲛ

^(Γ) **S** ym- e- on lived man- y years ^(M) till ^(Γ) he had be- held
^(Γ) ^(Δ) ^(N) ^(Γ)
^(M) ^(Γ)
 the Christ. ^(Γ) And he cried out un- - to Him: Now ^(Γ) do I ^(Γ)
 seek my ^(Γ) re- lease. ^(Γ)

^(Γ) **T** hou, O Maid- en Mar- - i- am, ^(Δ) ^(N) ^(Γ) art ^(Γ) in truth
^(Γ) ^(Δ) ^(N)
^(Γ) ^(M) ^(Γ)
 the mys- - tic tongs, ^(Γ) who with- in thy bless- - ed womb ^(Γ)
^(Γ) ^(M) ^(Γ)
 hast ^(Γ) con-ceived ^(Γ) the Em- ber, Christ. ^(Γ)

^(Γ) **W** ill- ing- ly wast Thou ^(N) ^(Γ) made man, ^(Γ) Who ^(Γ) art God ^(Γ) be-
^(M) ^(Γ) ^(N) ^(Γ)
 fore ^(Γ) all time; ^(Γ) to the Tem- ple Thou ^(Γ) art brought as ^(Γ)
^(M) ^(Γ)
 a babe of for- ty days. ^(Γ)

W^(Γ) hen the Mas- ter of all things ^(N) came ^(Γ) down from the
 Heav- ens' heights, ^(M) bless- ed Sym- - e- on ^(N) the priest
 took Him up in- to ^(M) his arms. Γ

O il- lu- mi- nate my soul ^(N) and ^(Γ) my sense of sight,
 O Lord, ^(Δ) so that I may clear- - ly see ^(Γ) and pro- claim
 Thee ^(M) as my God. Γ

In the shad- ow and let- ter of the Law, ^(N) let us the
 faith- ful con- tem- plate ^(N) a pre- fig- ur- - ing: ^(N) Eve- ry male
 child that o- pen- eth the womb is ho- ly un- to God. ^(Γ) There-fore do
 we mag- ni- fy the first-born ^(Γ) Word, ^(N) the Son of the Fa- - ther

Who is with- out be- gin-ning, ^(M) ^(Γ) the first- born Child of a Moth- -

^(N) ^(Γ) ^(M) er who hath not known _ wed- - lock. Γ

O ^(Γ) ^(N) ^(Γ) Thou Vir- gin Moth-er pure, where- - fore to the Tem-ple's

^(Δ) ^(N) ^(Γ) ^(M) courts ^χ ^q dost thou bring a new- - born babe to the arms __ of Sym-

^(Γ) e- on? Γ

I ^(N) ^(Γ) n the shad- ow and let- ter of the Law, ^χ ^q let us the

^(Π) ^(N) faith- ful con- tem- plate __ a pre- fig- ur- - ing: ^π ^q Eve- ry male __

^(Γ) ^(Π) ^(Γ) child that o- pen- eth the womb is ho- ly un- to God. ^π ^q There-fore do

we mag- ni- fy the first-born __ Word, ^χ ^q ³ the Son of the Fa- - ther

Who is with- out be- gin-ning, ^(M) ^(Γ) the first- born Child of a Moth- -

^(N) ^(Γ) ^(M)
er who hath not known __ wed- - lock. Γ
α

^(Γ) ^(N) ^(Γ)
To de- part hence do I seek _____ of __ Thee, O my

^(M) ^(Γ) ^(Δ) ^(N) ^(Γ)
Fash- ion- er; Γ
α for, O Christ, I have __ be-held Thee, my bright

^(M) ^(Γ)
and sav- ing Light. Γ
α

^(Γ) ^(Π)
Two nest-lings and a pair of tur- tle- doves χ
q were or- dained

^(N) ^(Γ)
for them of __ for-mer __ times; π
q in- stead of these, the di- vine El-

^(Π) ^(N)
der χ
q and the chaste _Proph- et- ess An- na π
q ³ min- is- tered

^(Γ)
un- to Him that was born __ of the Vir- gin, χ
q as to the Child

^(Γ) ⁵ ³
of __ the Fa- - ther, χ
q and they mag-ni- fied __ Him as He en- tered

^(Γ)
__ the Tem- ple. Γ
α

Translation copyright © Holy Transfiguration Monastery, Brookline, MA, used with permission. All rights reserved.
Chadi Karam (karamchadi@yahoo.com) Chicago, 2020.

Him Whom min- is- ters a- bove _____ serve with trem- bling and

_____ with awe, ^(M) here be- low doth Sym- e- on _____ now take in

his arms' _____ em- brace.

Two nest-lings and a pair of tur- tle- doves _____ were or- dained

for them of _____ for-mer _____ times; _____ in- stead of these, the di- vine El-

der _____ and the chaste _____ Proph- et- ess An- na _____ min- is- tered

un- to Him that was born _____ of the Vir- gin, _____ as to the Child

of _____ the Fa- - ther, _____ and they mag-ni- fied _____ Him as He en-tered

_____ the Tem- ple.

(Γ)
Glo- ry to the Fa- ther, and to the Son, and to the
 Ho- ly Spir- - it.

(N) (Γ)
In Thy na- ture, Thou art One, _____ yet ___ in Per- sons,
(M) (Γ) (N) (Γ)
 Thou ___ art Three: Ⲛ Keep Thy ser- vants from ___ all harm, _____ who
(M) (Γ)
 ___ be- lieve and trust ___ in Thee.

The El- der cried: 5ⲓ Ⲛ Thou hast re- stored un- to me the
(Π) (N) (Γ)
 joy of Thy sal- va- tion, O Christ; ⲡ Ⲛ re- ceive Thy ser- vant, who hath wea-
(Π) (N) (Γ)
 - ried him-self _____ in the shad- - ow, ⲡ (N) (Γ) to be a new in- i-
(N)
 ti- ate and sa- cred her-ald ___ of Grace, Ⲛ (N) as he mag- ni- fi- eth
(Γ) (M)
 Thee ___ with ___ praise.

B^(M) oth now and ev- er, and un- to ag- es of ag- es. A-

men. ^ⲓ

O^(Γ) The- o- to- - - kos, thou hope ^{(N) (Γ)} ___ of all ^{(M) Γ} Chris-

^(Γ) ___ tians: ^ⲓ Keep and shel- - ter and ^{(N) (Γ)} ___ pre- serve ^(Γ) ___ them ___

^{(M) (Γ)} that set their hope ___ on thee. ^ⲓ

A ct- - ing as a di- vine in- ter- pret- er, ^{ⲕⲓ} the chaste,

hal- lowed, and ven- ^(N) 'ra- ble An- - na ^{(N) πⲓ} o- pen- ly con-fessed

^(Γ) the Mas- ter ^{ⲕⲓ} with all ^{(N) (Γ)} ___ rev-'rence in the Tem- - ple; ^{πⲓ}

^{(N) (Γ)} and pro- claim- ing the The- o- to- kos, ^{ⲕⲓ} she mag- ni- fied ^{5↑} ___ her be-

fore all them that were pres- ent. ^ⲓ

O The - o - to - kos, thou hope of all

Chris - tians: Keep and shel - ter and pre - serve

them that set their hope on thee.

In the shad - ow and let - ter of the Law, let us the

faith - ful con - tem - plate a pre - fig - ur - ing: Every male

child that o - pen - eth the womb is ho - ly un - to God. There - fore do

we mag - ni - fy the first - born Word, the Son of the Fa - ther

Who is with - out be - gin - ning, the first - born Child of a Moth -

er who hath not known wed - lock.